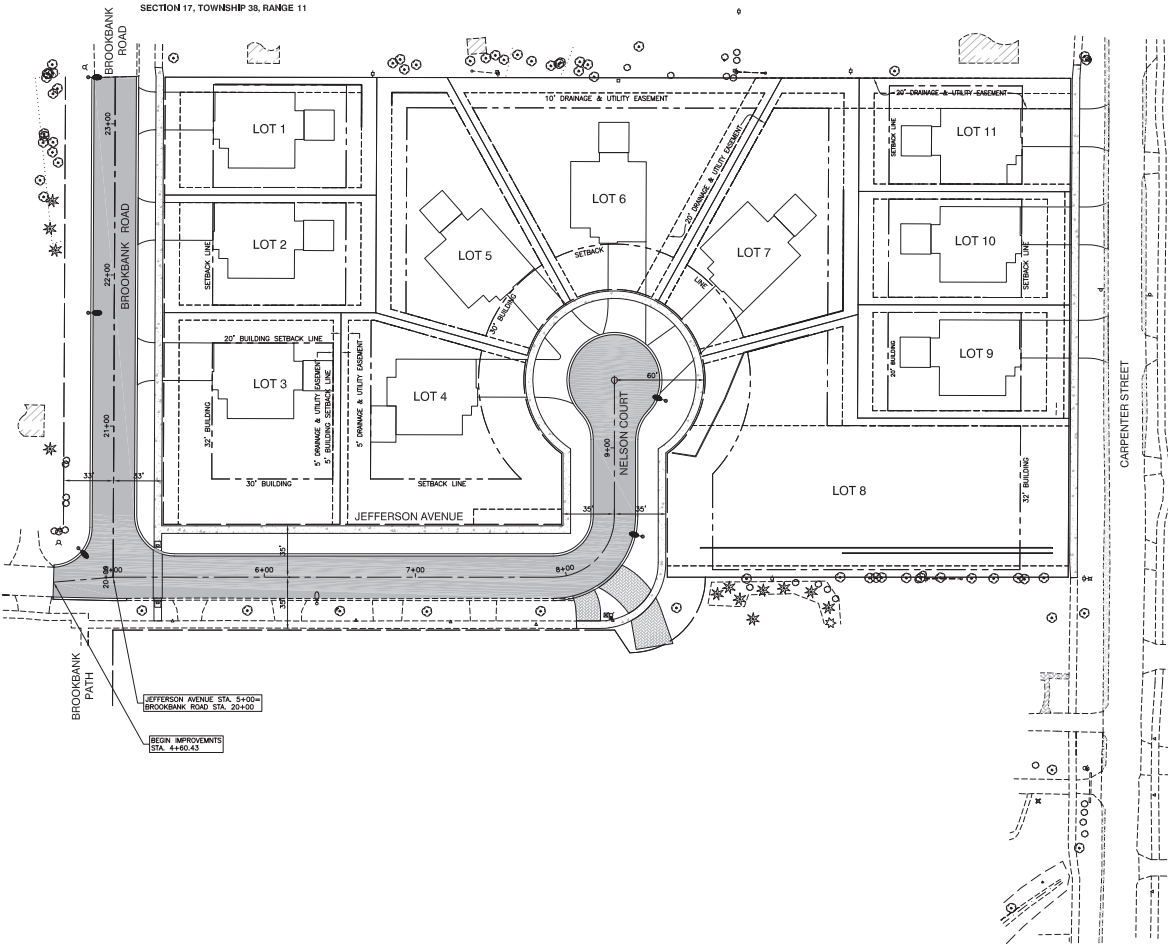


SECTION 17, TOWNSHIP 38, RANGE 11



LEGEND

- PROPOSED STREET LIGHT

NOTES

1. THE NEW LIGHTS CAN BE FED FROM THE EXISTING CONTROLLER ON JEFFERSON.
2. SEE VILLAGE SPECIFICATIONS AND DETAILS FOR LIGHT POLE AND CONTROLLER.
3. THE CONTROLLER WILL NEED TO BE UPDATED TO ACCOMMODATE THE LOADS OF THE OTHER LIGHTS INCLUDING BRANCH CIRCUITS.
4. ALL LIGHTS WILL NEED TO BE WIRED ACCORDING TO VILLAGE SPECIFICATIONS INCLUDING ALTERNATE CIRCUITS. THIS WILL INCLUDE REWIRING THE EXISTING LIGHT POLE ON JEFFERSON.
5. CONCRETE FOUNDATIONS AND CONDUIT ACCORDING TO VILLAGE SPECIFICATIONS. SEE DETAILS.

<b>ROBINSON ENGINEERING, LTD.</b>		<b>REVISIONS</b>		
CONSULTING ENGINEERS 1000 BROADVIEW AVENUE, SUITE 100 WILKINSON, ILLINOIS 62451 TEL: 618-241-1111 FAX: 618-241-1112 WWW.ROBINSONENGINEERING.COM		1	08-24-12	11,12,13
<b>NELSON MEADOW</b> <b>BROOKBANK ROAD &amp; JEFFERSON AVENUE</b> <b>LIGHTING PLAN</b>		2	08-15-12	11,12,13
		3	08-25-12	11,12,13
		4	10-08-12	11,12,13
		5	10-28-12	11,12,13
		6	11-08-12	11,12,13
<b>DOWNERS GROVE, ILLINOIS</b> Drawn by: ELK/KWM Date: 08/24/12 Checked by: WJ/CJ Issue: 11/28/12 Scale: 1/2" = 20' Plot No.: 14-276-01				